



### 1 Camden Gardens TURRAMURRA NSW

4 2 2

Located in a convenient and quiet part of North Turramurra this contemporary home is situated on the high side of an attractive cul-de-sac.

The house nestles into a leafy bush block of approximately 923 sqm and has an ideal aspect, facing north. Large windows have been placed to take advantage of the view.

This spacious home features a versatile floor plan and excellent flow to the covered outdoor entertaining areas. Offering four bedrooms and two bathrooms (one with spa bath), this property offers a great opportunity to acquire a house of this size and position in an affordable price range.

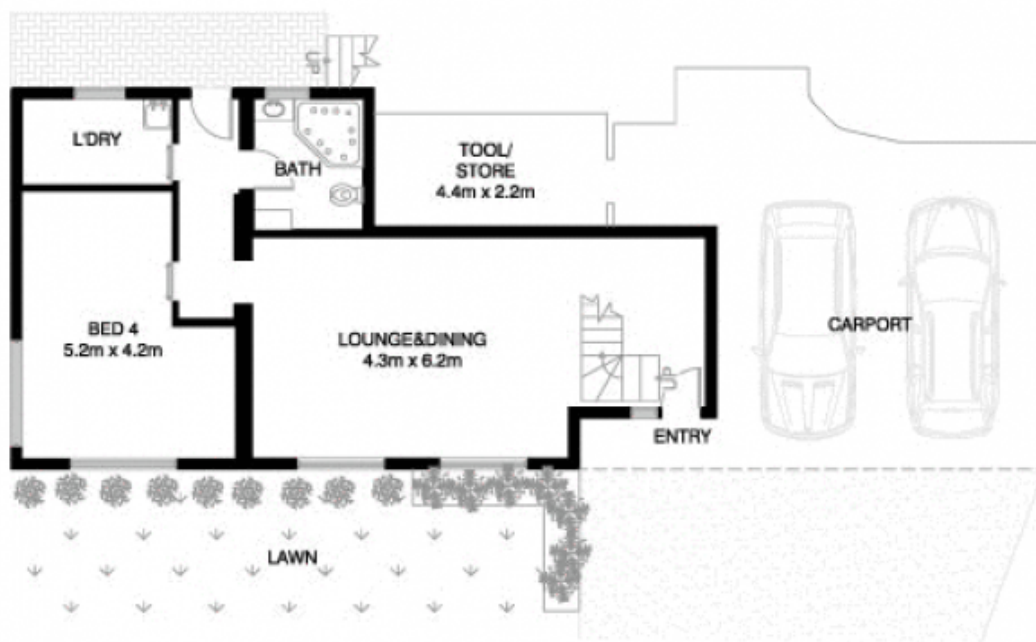
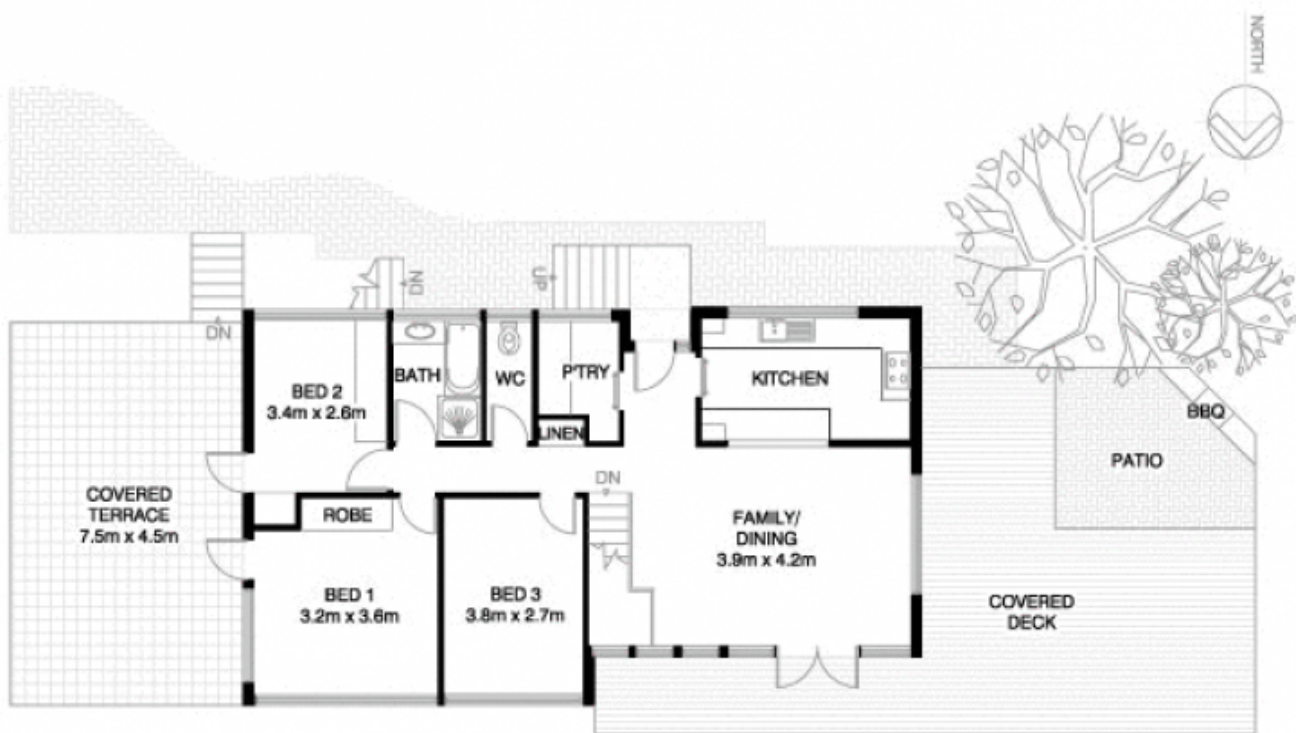
Covered parking for 2 cars providing direct access to the

[For full version visit the website](https://www.tnre.com.au)

**Type** : House  
**Land Size** : 923 sqm  
**View** : <https://www.tnre.com.au/sale/nsw/north-sho-re-upper/turramurra/residential/house/7416271>



**Julie Rodgers**  
**9449 3075**



## NORTH TURRAMURRA 1 CAMDEN GARDENS

\*INTERNAL FLOOR AREA APPROX 159m<sup>2</sup>



V-MARK DESIGN PTY LTD  
18/75 PACIFIC HIGHWAY  
WATARA NSW 2077  
MOB : 0400 201 458  
EMAIL : dave@v-markdesign.com.au  
ABN : 12 109 067 950

\*NOTE: ALL DIMENSIONS SHOWN ARE APPROXIMATE AND SHOULD ONLY BE USED AS A GUIDE. NOT TO SCALE.