



5 Yallambee Road BEROWRA NSW

3 1 2

This is an ideal opportunity to purchase a much loved family home before marketing commences next year. Situated on a near level large block of approximately 920 square metres, this house comprises three bedrooms (built-ins to main) and a study, two living areas, renovated kitchen and a main bathroom plus extra W.C.

There is also a single lock up garage and a carport. The original owners are reluctantly selling in order to downsize and it is obvious to anyone who visits the property that it has been very well maintained since it was built more than 50 years ago.

Conveniently located close to the freeway entrance and approximately 1.6 klm from Berowra Railway Station. The house is looking for new owners who will be happy in it as it is or who perhaps wish to build on the potential it offers.

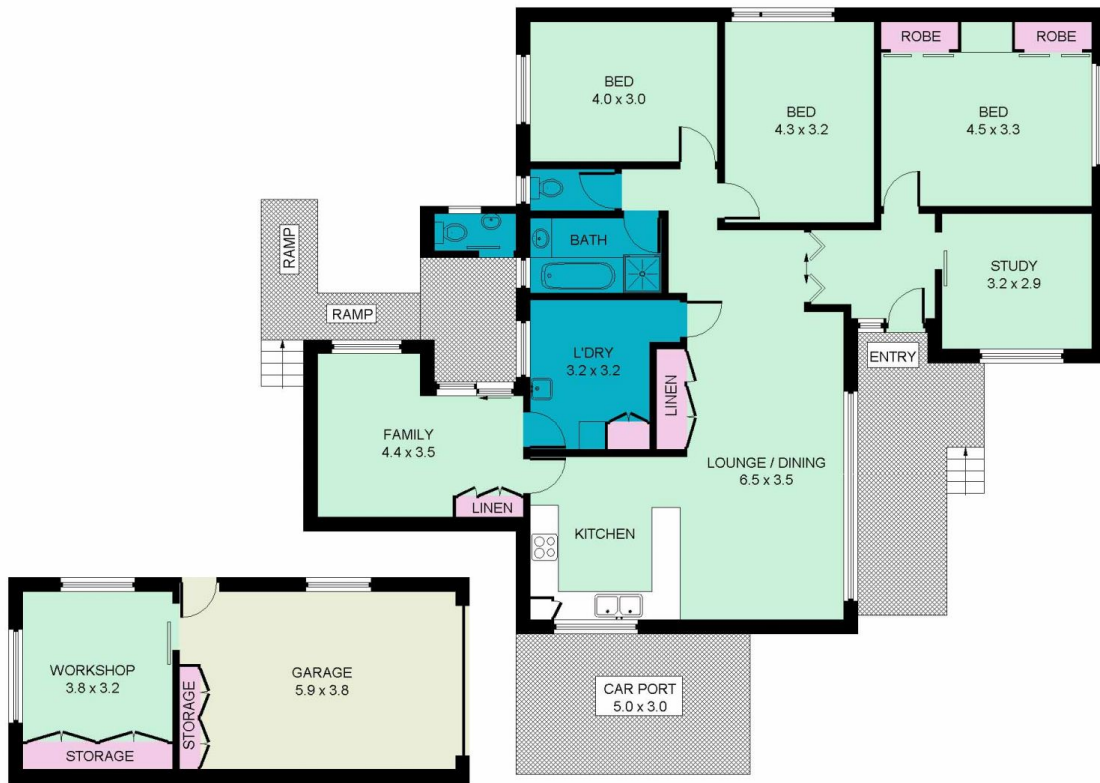
[For full version visit the website](https://www.tnre.com.au)

Type : House

View : <https://www.tnre.com.au/sale/nsw/north-shore-upper/berowra/residential/house/7416295>



Julie Rodgers
9449 3075



OUTBUILDING

5 Yallambee Road, Berowra

This information is not to be relied upon.
 It is strictly for marketing & illustration purposes only.
 All measurements are approximate. Not to scale.
 No liability accepted.
 You must rely on your own inquiries and seek advice from your solicitor. (ID44421)

