



18 Lind Avenue OATLANDS NSW

3 1 1

Located in a sought after area, this cottage is situated on a large block of approximately 1050 square metres.

Although the house has dated decor and is in need of substantial renovation, it offers great potential to anyone who wishes to capitalise on the underdeveloped land.

The property is convenient to several schools, both public and private, local shops and parks. Oatlands Golf Course is approximately 550 metres away.

Bus transport is also close by, with easy access to routes along Pennant Hills Road leading to several destinations including Parramatta, Epping, Macquarie University and Macquarie Shopping Centre.

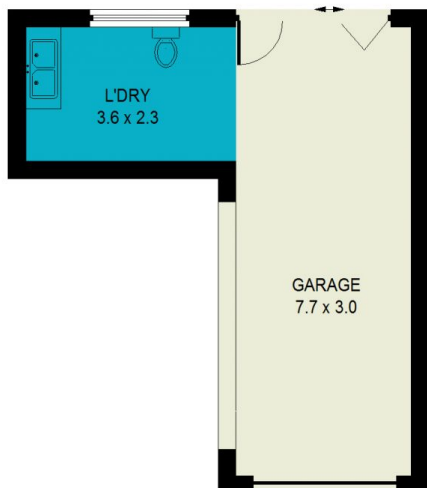
Land Size : 1050 sqm

View : <https://www.tnre.com.au/sale/nsw/parramatta/oatlands/residential/house/7416304>

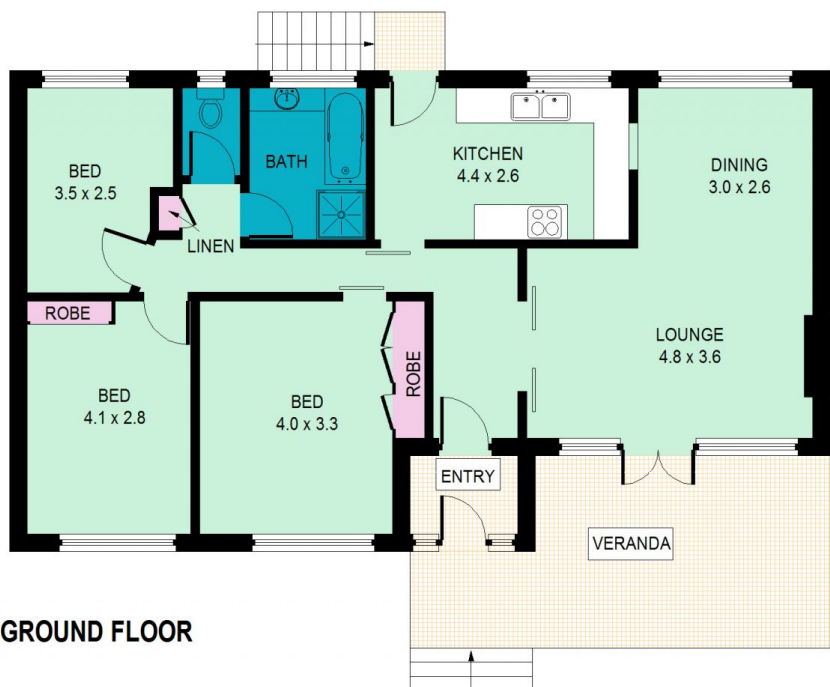


Julie Rodgers
9449 3075

*****DISCLAIMER*****



LOWER GROUND FLOOR



GROUND FLOOR

18 Lind Avenue, Oatlands

This information is not to be relied upon.
It is strictly for marketing & illustration purposes only.
All measurements are approximate. Not to scale.
No liability accepted.

You must rely on your own inquiries and seek advice from your solicitor.(ID92980)

