



37 Janet Street RUSSELL LEA NSW

2 1 1

Located in a quiet, treelined street, which is highly sought after and tightly held, approximately 200 metres to Lyons Road with its array of cafes, specialty stores and bus stops, this property is a rare find.

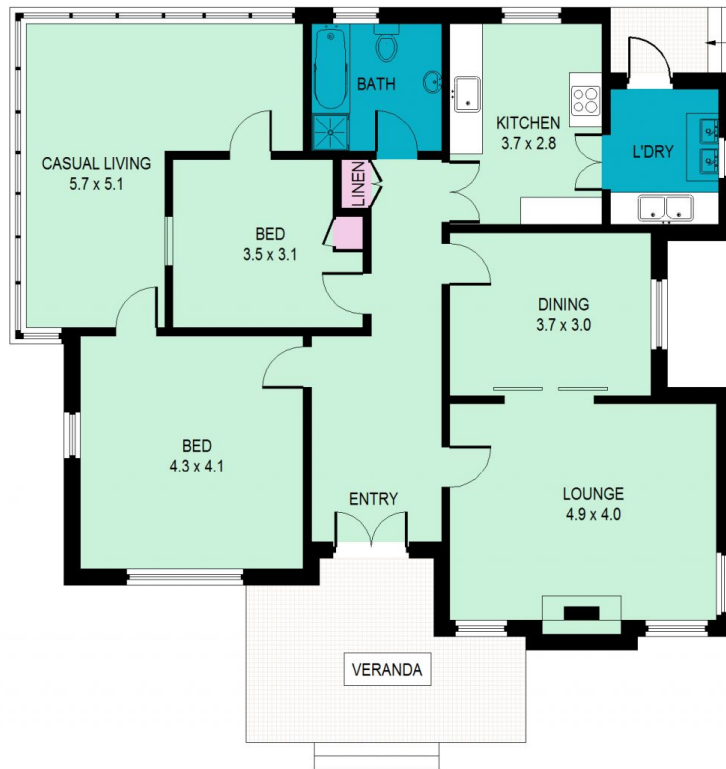
This Californian Bungalow is situated on a large (approximately 640 square metres) level, north facing block and presents a great opportunity to either renovate and extend or rebuild (subject to Council requirements and approval).

Being offered for sale for the first time since it was built c. 1920 and having been occupied by one family throughout that period, the home retains many of the original features including leadlight windows, picture rails, floorboards (under carpet), tessellated tiles on the veranda, patterned cornices, high ceilings and light fittings.

Land Size : 640 sqm
View : <https://www.tnre.com.au/sale/nsw/inner-west/russell-lea/residential/house/7416306>



Julie Rodgers
9449 3075



37 Janet Street, Russell Lea



This information is not to be relied upon.
It is strictly for marketing & illustration purposes only.
All measurements are approximate. Not to scale.
No liability accepted.
You must rely on your own inquiries and seek advice from your solicitor.(ID190585)